

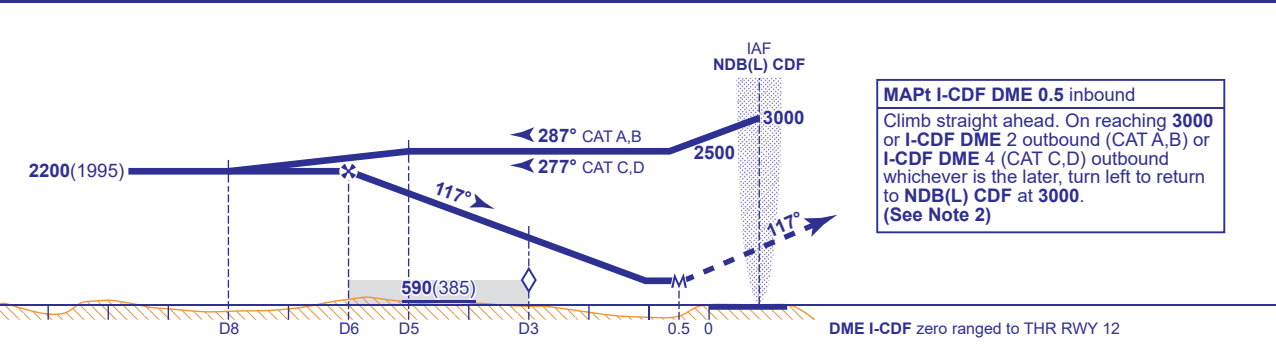
INSTRUMENT APPROACH CHART - ICAO

CARDIFF
LOC/DME/NDB(L)
RWY 12
(ACFT CAT A,B,C,D)

| | | | | |
|--|----------------------|---------------------|---|------------------------------------|
| | APP 119.155, 125.855 | CARDIFF APPROACH | AD ELEVATION 220 | TRANSITION ALTITUDE 6000 |
| | TWR 133.105 | CARDIFF TOWER | THR ELEVATION 205 | |
| | RAD 125.855 | CARDIFF RADAR | OBSTACLE ELEVATION 1299 AMSL (1094) (ABOVE THR) | |
| | 119.155 (LARS) | | | |
| | ATIS 132.480 | CARDIFF INFORMATION | BEARINGS ARE MAGNETIC | |



| RECOMMENDED PROFILE Gradient 5.2%, 320FT/NM | | | | | |
|---|------------|------------|------------|----------|----------|
| DME I-CDF | 5 | 4 | 3 (SDF) | 2 | 1 |
| ALT(HGT) | 1850(1645) | 1530(1325) | 1210(1005) | 890(685) | 570(365) |



| Aircraft Category | | A | B | C | D | Rate of descent | G/S KT | 160 | 140 | 120 | 100 | 80 |
|--------------------|-----------------|----------|----------|------------|------------|-----------------|--------|-----|-----|-----|-----|-----|
| OCA (OCH) | Procedure | 470(265) | 470(265) | 510(305) | 510(305) | | FT/MIN | 850 | 740 | 640 | 530 | 420 |
| VM(C)OCA (OCH AAL) | Total Area | 680(460) | 820(600) | 1560(1340) | 1690(1470) | | | | | | | |
| | SW of RWY 12/30 | 680(460) | 820(600) | 920(700) | 920(700) | | | | | | | |

NOTE 1 Subject to ATC approval, aircraft inbound to NDB(L) CDF and receiving DME I-CDF may descend to 3000 after passing I-CDF DME 10.
NOTE 2 Aircraft to remain within I-CDF DME 10 during the missed approach turn in order to be contained within Cardiff controlled airspace. If unable to comply, notify ATC.

CHANGE (8/21): APP, TWR, RAD FREQUENCIES REVISED.